

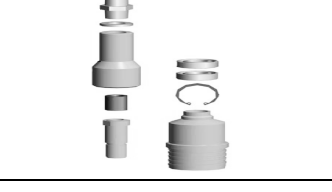



KOMPLE KAROTİYER GRUBU / CORE BARREL ASSEMBLY				FOTOĞRAF / PHOTO
1	B-N-H-P WL	DIŞ TÜP 1,5M	OUTER TUBE 1,5M	
2	B-N-H-P WL	DIŞ TÜP 3,0M	OUTER TUBE 3,0M	
3	B-N-H-P WL	İÇ TÜP 1,5M	INNER TUBE 1,5M	
4	B-N-H-P WL	İÇ TÜP 3,0M	INNER TUBE 3,0M	
5	B-N-H-P WL	ZIRH KÖŞELİ - V/T - KAYNAKLI	LOCKING COUPLING FULL-HOLE / TC / WSC	
6	B-N-H-P WL	ZIRHALTI	ADAPTER COUPLING	
7	B-N-H-P WL	KAROTİYER BAŞLIĞI	HEAD ASSEMBLY	
8	B-N-H-P WL	SEGMAN DURDURUCU HALKA	STOP RING	
9	B-N-H-P WL	SEGMAN	CORE LIFTER	
10	B-N-H-P WL	SEGMAN YUVASI	CORE LIFTER CASE	
11	B-N-H-P WL	DURDURUCU ÇELİK BİLEZİK	LANDING RING	
12	B-N-H-P WL	İÇ TÜP MERKEZLEYİCİ SARI BİLEZİK	INNER TUBE STABILIZER	
13	B-N-H-P WL-3	SEGMAN DURDURUCU HALKA	STOP RING	
14	B-N-H-P WL-3	SEGMAN	CORE LIFTER	
15	B-N-H-P WL-3	SEGMAN YUVASI	CORE LIFTER CASE	
16	B-N-H-P WL-3	YARIKLI İÇ TÜP	SPLIT TUBE	
17	B-N-H-P WL-3	KAROT ÇIKARTMA PİSTONU	PUMP OUT PISTON	
KAROTİYER BAŞLIĞI YEDEKLERİ / HEAD ASSEMBLY SPARE PARTS				FOTOĞRAF / PHOTO
18	B-N-H-P WL / WL-U	ÇAMBAŞI	SPEARHEAD	
19	B-N-H-P WL / WL-U	ÇAMBAŞI PİMİ	SPEARHEAD PIN	
20	B-N-H-P WL / WL-U	ÇAMBAŞI YAYI	SPEARHEAD SPRING	
21	B-N-H-P WL / WL-U	ÇAMBAŞI SUSTASI	SPEARHEAD DETENT PLUNGER	
22	B-N-H-P WL / WL-U	ÇAMBAŞI GÖVDESİ	SPEARHEAD BODY	
23	B-N-H-P WL / WL-U	BAŞLIK MANDAL KOVANI - GÖMLEK MUHAFAZA	LATCH RETRACTING CASE	
24	B-N-H-P WL / WL-U	BAŞLIK KOVAN PİMİ	SPRING PIN	
25	B-N-H-P WL / WL-U	ÜST GÖVDE CİVATASI	NYLOK BOLT	
26	B-N-H-P WL / WL-U	ÜST GÖVDE PULU	WASHER	
27	B-N-H-P WL / WL-U	BAŞLIK BASKI YAYI	COMPRESSION SPRING	
28	B-N-H-P WL / WL-U	BAŞLIK ÜST GÖVDESİ - MANDAL YATAĞI	UPPER LATCH BODY	
29	B-N-H-P WL / WL-U	BAŞLIK MANDALI	LATCH	
30	B-N-H-P WL / WL-U	MANDAL DESTEĞİ	LINK	
31	B-N-H-P WL / WL-U	MANDAL PİMİ	SPRING PIN	
32	B-N-H-P WL / WL-U	BAŞLIK DURDURUCU BİLEZİK	LANDING SHOULDER	
33	B-N-H-P WL / WL-U	ÇELİK MİSKET	BALL 22MM	
34	B-N-H-P WL / WL-U	İKAZ MİSKET YATAĞI	FLUID RETENSION BUSHING / INDICATOR BUSHING	
35	B-N-H-P WL / WL-U	TANSİYON YAYI	FLUID RETENSION SPRING	
36	B-N-H-P WL / WL-U	BAŞLIK ALT GÖVDESİ	LOWER LATCH BODY	
37	B-N-H-P WL / WL-U	MİL SOMUN PULU	WASHER	
38	B-N-H-P WL / WL-U	MİL SOMUNU	NUT 1-1/2"	
39	B-N-H-P WL / WL-U	BAŞLIK MİLİ	HOLLOW SPINDLE	
40	B-N-H-P WL / WL-U	BAŞLIK LASTİĞİ	SHUT-OFF VALVE	
41	B-N-H-P WL / WL-U	LASTİK AYAR PULU	SHUT-OFF VALVE WASHER	
42	B-N-H-P WL / WL-U	KONİK LASTİK PULU	TAPERED SHUT-OFF WASHER	
43	B-N-H-P WL / WL-U	ZARFLI RULMAN	THRUST BEARING	
44	B-N-H-P WL / WL-U	RULMAN KOVANI	SPINDLE BUSHING	
45	B-N-H-P WL / WL-U	GRASÖRLÜK	GREASE FITTING	
46	B-N-H-P WL / WL-U	BAŞLIK BASKI YAYI	COMPRESSION SPRING	
47	B-N-H-P WL / WL-U	BASKI YAYI PULU	WASHER 1-1/4"	
48	B-N-H-P WL / WL-U	BASKI YAYI SOMUNU	LOCKING NUT 1-1/4"	
49	B-N-H-P WL / WL-U	ÇELİK MİSKET	BALL 22MM	
50	B-N-H-P WL / WL-U	KEP PİMİ	SPIROL PIN 3/16"x1-3/4"	
51	B-N-H-P WL / WL-U	KEP MİSKET YUVASI	CHECK VALVE BODY	
52	B-N-H-P WL / WL-U	İÇ TÜP KEPİ	INNER TUBE CAP	
KONVENSİYONEL SU BAŞLIĞI / CONVENTIONAL WATER SWIVEL				FOTOĞRAF / PHOTO
53		NİPEL	NIPPLE	
54		KEÇE RİNGİ	SEAL RING	
55		ÜST GÖVDE	UPPER BODY	
56		ELMASLI KEÇE	DIAMOND FELT	
57		ELMASLI MİL	DIAMOND SPINDLE	
58		RULMAN	BALL BEARING	
59		SEGMAN	CIRCLIP	
60	AW-AWJ-B-N-H-P WL	ALT GÖVDE	UNDERBODY	
NORMAL VE AĞIR HİZMET SU BAŞLIĞI / STANDART DUTY & HEAVY DUTY WATER SWIVEL				FOTOĞRAF / PHOTO
61		BAŞLIK	WATER SWIVEL HOIST CAP	
62		YAY 1	COMPRESSION SPRING	
63		KEÇE	FELT	

64		O-RING	O-RING
65		KEÇE TAKIMI	PACKING HOUSING
66		SOMUN	NUT
67		SIKMA VIDASI	GRUB SCREW
68		BELLEVİLE PULU	BELLEVILE WASHER
69		KORUYUCU PUL	THRUST WASHER
70		İÇ SEGMAN	INTERNAL CIRCLIP
71		RULMAN	BALL BEARING
72		DIŞ DÖNÜŞ MİLİ	EXTENSION SPINDLE
73		BAŞLIK MİLİ	SWIVEL SPINDLE
74		YÜK PULU	LOAD WASHER
75		ALT GÖVDE	UNDERBODY
76		GRESÖRLÜK	GREASE FITTING
77	B-N-H-P-S WL	SU BAŞLIĞI ADAPTÖRÜ	WATER SWIVEL ADAPTER
MANEVRA BAŞLIĞI / HOUSTING PLUG			
78		MANEVRA BAŞLIĞI KOMPLE	HOUSTING PLUG ASSEMBLY
79		MANEVRA BAŞLIĞI GÖVDE	BODY
80		MANEVRA BAŞLIĞI ÜST MİLİ	HOUSTING PLUG UPPER SPINDLE
81		MANEVRA BAŞLIĞI RULMANI	THRUST BEARING
82	B-N-H-P-S WL	MANEVRA BAŞLIĞI GEÇİŞ ADAPTÖRÜ	HOUSTING PLUG ADAPTER
ADAPTÖRLER / ADAPTERS			
83		AWJ-AW	SUB
84		AW-BW	SUB
85		BW-BQ	SUB
86		BW-NQ	SUB
87		BW-HQ	SUB
88		BW-PQ	SUB
89		BQ-NQ	SUB
90		NQ-HQ	SUB
91		HQ-PQ	SUB
92		PQ-SQ	SUB
OVERSHOT / OVERSHOT ASSEMBLY			
93	B-N-H-P WL / WL-U	KOMPLE OVERSHOT + KURTARICI	OVERSHOT + LOCKING SLEEVE
94		BAĞLANTI CİVATASI	BOLT CABLE SWIVEL EYE
95		HANGER BEARING ALIN RULMANI	HANGER BEARING
96		RULMAN YATAĞI	CABLE SWIVEL COLLAR
97		SOMUN	NYLOC NUT
98		MİL	CABLE SWIVEL BODY WL
99		GRESÖRLÜK	GREASE FITTING
100		İÇ SAPLAMA	JAR STAFF
101		SAPLAMA MUHAFAZA BORUSU	JAR TUBE
102		SAPLAMA YATAĞI	JAR STAFF SEAT
103		SOMUN	HEX NUT
104		YAY YATAĞI	CAP, E-ZY LOCK
105		YAY	SPRING, E-ZY LOCK
106		KİLİT MUHAFAZASI	SLEEVE, E-ZY LOCK
107		MAKAS YATAĞI	OVERSHOT HEAD, E-ZY LOCK
108		MİSKET	STEEL BALL WL
109		MİSKET YAYI	COMPRESSION SPRING
110		MANDAL YAYI	LIFTING DOG COMPRESSION SPRING
111		MANDAL	LIFTING DOG
112		MANDAL PİMİ	LIFTING DOG SPRING PIN
113		PİM	SPRING PIN
114		KURTARICI	LOCKING SLEEVE
115		KURTARICI CİVATASI	LOCKING SLEEVE BOLT
116	H-P-S WL	KARE BURÇ	LOCKING SLEEVE RING
YERALTI OVERSHOTLAR / UNDERGROUND OVERSHOT			
117	B-N-H-P WL-U	OVERSHOT KOMPLE	OVERSHOT COMPLETE
118		BAĞLANTI CİVATASI	BOLT CABLE SWIVEL EYE
119		ALIN RULMANI	HANGER BEARING
120		RULMAN YATAĞI	CABLE SWIVEL COLLAR
121		SOMUN	NUT
122		MİL	CABLE SWIVEL BODY
123		SOMUN	THUMB NUT
124		PUL	WASHER
125		KEÇE	SEAL
126		İÇ SAPLAMA	JAR STAFF
127		SAPLAMA MUHAFAZA BORUSU	JAR TUBE



FOTOĞRAF / PHOTO



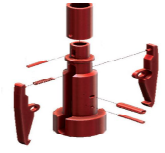
FOTOĞRAF / PHOTO



FOTOĞRAF / PHOTO



128		MAKAS YATAĞI	OVERSHOT HEAD
129		BAĞLANTI PİMİ	CONNECTION SPRING PIN
130		MANDAL	LIFTING DOG
131		MANDAL YAYI	LIFTING DOG COMPRESSION SPRING
132		MANDAL PİMİ	LIFTING DOG SPRING PIN
133		PİM	SPRING PIN



TAHLİSİYELER / RECOVERY TAPS AND CUTTERS

FOTOĞRAF / PHOTO

134		TT-46/48 FARE KUYRUK TAHLİSİYE	TT-46/48 ROD RECOVERY BELL
135		BWL DİŞİ TAHLİSİYE	BWL ROD RECOVERY BELL
136		NWL DİŞİ TAHLİSİYE	NWL ROD RECOVERY BELL
137		HWL DİŞİ TAHLİSİYE	HWL ROD RECOVERY BELL
138		PWL DİŞİ TAHLİSİYE	PWL ROD RECOVERY BELL
139		BWL ERKEK TAHLİSİYE	BWL ROD RECOVERY TAP
140		NWL ERKEK TAHLİSİYE	NWL ROD RECOVERY TAP
141		HWL ERKEK TAHLİSİYE	HWL ROD RECOVERY TAP
142		PWL ERKEK TAHLİSİYE	PWL ROD RECOVERY TAP



TİJ KESİCİ BİÇAKLAR / ROD CUTTER

FOTOĞRAF / PHOTO

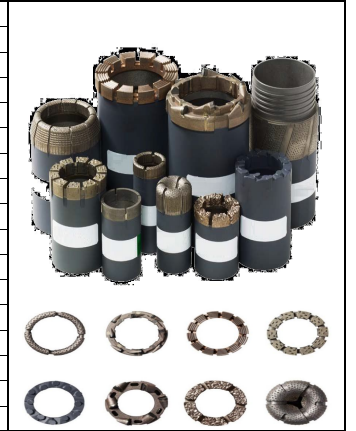
143		NWL TİJ KESİCİ	NWL ROD CUTTER
144		NWL TİJ KESİCİ BİÇAKLARI	NWL ROD CUTTER BLADES
145		HWL TİJ KESİCİ	HWL ROD CUTTER
146		HWL TİJ KESİCİ BİÇAKLARI	HWL ROD CUTTER BLADES
147		PWL TİJ KESİCİ	PWL ROD CUTTER
148		PWL TİJ KESİCİ BİÇAKLARI	PWL ROD CUTTER BLADES
149		TİJ KESİCİ TAMİR TAKIMI	ROD CUTTER REPAIR KIT



ELMASLI ÜRÜNLER / DIAMOND TOOLS

FOTOĞRAF / PHOTO

150	TT-46/48	EMPRENYE ELMAS MATKAP (MATRİKS SERİSİ 1-14)	IMPREGNATED DIAMOND BIT (MATRIX SERIE 1-14)
151	B-46/48	EMPRENYE ELMAS MATKAP (MATRİKS SERİSİ 1-14)	IMPREGNATED DIAMOND BIT (MATRIX SERIE 1-14)
152	BWG-NWG	EMPRENYE ELMAS MATKAP (MATRİKS SERİSİ 1-14)	IMPREGNATED DIAMOND BIT (MATRIX SERIE 1-14)
153	B-N-H-P WL	EMPRENYE ELMAS MATKAP (MATRİKS SERİSİ 1-14)	IMPREGNATED DIAMOND BIT (MATRIX SERIE 1-14)
154	B-N-H-P WL-3	EMPRENYE ELMAS MATKAP (MATRİKS SERİSİ 1-14)	IMPREGNATED DIAMOND BIT (MATRIX SERIE 1-14)
155	TT-46/48	EMPRENYE ELMAS PORTKRON	IMPREGNATED REAMING SHELL
156	B-46/48	EMPRENYE ELMAS PORTKRON	IMPREGNATED REAMING SHELL
157	BWG-NWG	EMPRENYE ELMAS PORTKRON	IMPREGNATED REAMING SHELL
158	B-N-H-P WL	EMPRENYE ELMAS PORTKRON	IMPREGNATED REAMING SHELL
159	B-N-H-P WL	EMPRENYE ELMAS ÇARIK	IMPREGNATED CASING SHOE
160	B-N-H-P WL	EMPRENYE ELMAS ZİRH	IMPREGNATED LOCKING COUPLING
161	B-46/48	VİDYE	
162	BWG-NWG	VİDYE	
163	B-46/48	VİDYE PORTKRON	T/C SHELL
164	BWG-NWG	VİDYE PORTKRON	T/C SHELL
165	B-N-H-P WL	VİDYE PORTKRON	T/C SHELL
166	B-N-H-P WL	VİDYE KRON	



ÇAMUR POMPASI VE YEDEKLERİ / MUD PUMP EQUIPMENT

FOTOĞRAF / PHOTO

167	85-135 LT/DK	POMPA GÖVDESİ	PUMP CASE
168	85-135 LT/DK	KRANK DİŞLİSİ	CRANK SHAFT
169	85-135 LT/DK	BİLYE KOLU	CONNECTION ROD
170	85-135 LT/DK	BİYEL SARI YATAĞI	BEARING INSERT
171	85-135 LT/DK	BURÇ	BUSHING, CONNECTING ROD
172	85-135 LT/DK	CIVATA	BOLT, CONNECTION ROD
173	85-135 LT/DK	SOMUN	NUT, CONNECTION ROD
174	85-135 LT/DK	ROT VE PISTOM	CROSSHEAD & ROD ASSEMBLY
175	85-135 LT/DK	AYAR VİDASI	SET SCREW
176	85-135 LT/DK	PİM	WRIST PIN
177	85-135 LT/DK	O-RİNG	O-RING
178	85-135 LT/DK	KONİK RULMAN	CONE, BEARING
179	85-135 LT/DK	KONİK RULMAN YATAĞI	CUP, BEARING
180	85-135 LT/DK	YAN KAPAK, BÜYÜK	HOUSING, CRANKSHAFT BEARING
181	85-135 LT/DK	VİDA, YAN KAPAK	CAP SCREW
182	85-135 LT/DK	VİDA	CAP SCREW
183	85-135 LT/DK	KRANK MİLİ	PINION SHAFT
184	85-135 LT/DK	RULMAN	BALL BEARING
185	85-135 LT/DK	RULMAN KAPAĞI	CAP, BEARING
186	85-135 LT/DK	YAN KAPAK, KÜÇÜK	CAP, PINION BEARING
187	85-135 LT/DK	MUHAFAZA KAPAĞI	COVER, PLATE
188	85-135 LT/DK	CIVATA	CAP SCREW
189	85-135 LT/DK	PUL	WASHER, PACKING
190	85-135 LT/DK	KEÇE	SEAL, OIL



191	85-135 LT/DK	BİLEZİK	SLEEVE, PACKING NUT
192	85-135 LT/DK	SOMUN, ROT	NUT, PLUNGER ROD
193	85-135 LT/DK	KAPAK, YAĞ HAZNESİ	CAP, OIL
194	85-135 LT/DK	SAPLAMA 5/8"	STUD, LONG 5/8" DIAMETER
195	85-135 LT/DK	CONTA	GASKET CYLINDER, FIBER / COPPER
196	85-135 LT/DK	GÖMLEK (SERAMİK/KROM)	CYLINDER, CERAMIC
197	85-135 LT/DK	SARI	CUP
198	85-135 LT/DK	KEÇE (ÇANAK KEÇE)	CYLINDER PACKING
199	85-135 LT/DK	PUL	WASHER
200	85-135 LT/DK	SOMUN, ROT	NUT, PLUNGER
201	85-135 LT/DK	SOMUN, ÖZEL	NUT, SPECIAL
202	85-135 LT/DK	POMPA KAFASI	VALVE CHAMBER
203	85-135 LT/DK	BİLYA YATAĞI	VALVE SEAL, BALL
204	85-135 LT/DK	BİLYA YATAĞI	BALL
205	85-135 LT/DK	CONYA, KÜÇÜK	GASKET VALVE COVER, FIBER / COPPER
206	85-135 LT/DK	ÜST KLEPE	VALVE COVER
207	85-135 LT/DK	VALF KAPAĞI	CLAMP, VALVE COVER
208	85-135 LT/DK	SOMUN	NUT
209	85-135 LT/DK	SAPLAMA, ÜST	STUD
210	85-135 LT/DK	CONTA, ORTA	GASKET CYLINDER HEAD, FIBER / COPPER
211	85-135 LT/DK	TAKOZ	CYLINDER COVER
212	85-135 LT/DK	KAPAK, SİLİNDİR KAFASI	CLAMP, CYLINDER HEAD
213	85-135 LT/DK	SAPLAMA	STUD
214	85-135 LT/DK	SOMUN	NUT

